

The Nanolux DE (Double Ended) 1000 watt Complete Fixture has the highest luminous flux output currently on the market at 160,300lm and an output of 1200 watts. With more unique features and safety protection than our competitors combined with its leading output specifications, the Nanolux DE Fixture is in a class of its own.

Features:

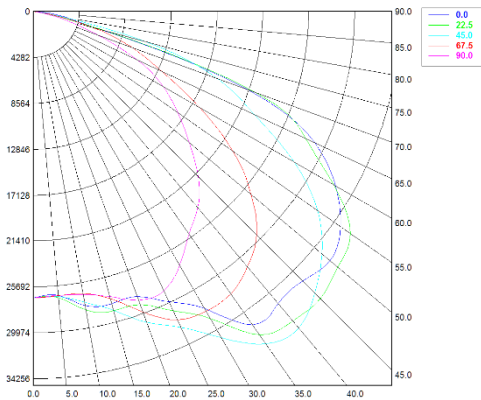
- This is a compact or Remote Ballast System (supplied lamp cord)
- (4) Interchangeable Reflector options (coming soon)
- Cloud Ballast Feature (sold separately) - Using NCCS Router
- Nanolux Sunrise/Sunset with additional Hi-Temp Shutdown Features through NCCS Router
- Latest Wireless Security Technology in using Gigabyte Encryption
- Out of box, Plug and Play installation
- Best commercial light in class for light uniformity reflector
- Equipped with a 6 phase dimming (600-1200 watts)
- This unit Includes Nanolux DE bulb (2100 μmol)
- Patented and Exclusive Ceramic receptacles (no melting plastic)
- This unit is compatible with other industry DE Bulbs
- Designed for 5' x 5' growing grid as a stand-alone, and up to an 8x8 for supplemental greenhouse lighting
- Slow Soft Start, open circuit and low voltage protection
- 3 Year Warranty
- **Input Voltage** 208/220/240Vac, 277V, 347V, 480V
- **Output** 600-1200watts (6 full settings)
- **Input Frequency** 50/60HZ
- **THD** <10%, **PF** > .99, **CF** <1.7Ta = 30 C (86 F), Tc = 65 C (149F)
- Ballast and Fixture weight: 11.7lbs
- Ballast and Fixture Dimension: 26.2" x 12" x 6.1"

FOUR NANOLUX EXCLUSIVE FEATURES THAT SEPERATES NANOLUX FROM OTHER BRANDS



Nanolux SQ Reflector Distribution Curve

3' Plane Distribution Data

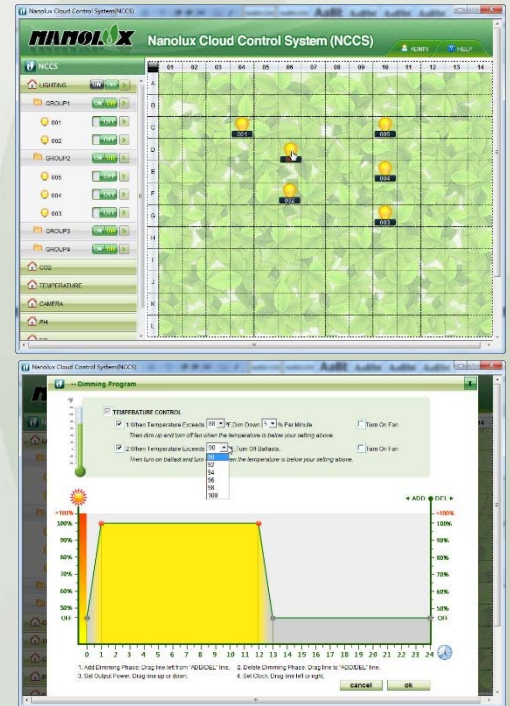


Illuminance	
Average	2500.2859
Maximum	4038.1377
Minimum	1207.0677
Avg/Min	2.0714
Max/Min	3.3454

NCCS Nanolux Cloud Control System



The Nanolux cloud control system was designed and engineered to provide a complete solution for the control of the lighting and environmental controls of a grow room. The NCCS system allows for precision control of all devices in a grow room through its simple and intuitive computer software program. At the heart of the NCCS is a software program which allows you to specify all of the parameters of your lighting and environmental control settings in your room. The program is then downloaded from your computer to the DTU {data transfer unit}. The DTU is the brain of the system and communicates and controls all of the selected functions in the grow room through wireless modem communication. The DTU controls lighting ballasts and environmental control devices by communicating wirelessly with individual RTU {remote terminal unit} USB devices. The NCCS system currently allows for precision control of your lighting system with dimming, multiple lighting areas, high-temperature dimming features along with fan control. The NCCS will be adding CO2 functions, humidity and temperature control, pH and nutrient control, pump control and remote camera features in the near future.



DE Ballast Electrical Data

	Ballast Output Setting	Input Voltage (V)	Input Current (A)	Input Power (W)	Power Factor (%)	THD (%)	Output Voltage (V)	Output Current (A)	Output Power (W)	Output Frequency (Khz)	CCF (%)	Ballast Efficiency (%)
Nanolux	1200W	240.3	5.258	1262.30	0.999	3.9	272.90	4.528	1230	71.98	1.408	97.44
	1000W	240.4	4.348	1043.70	0.999	4.6	238.20	4.311	1027	83.88	1.567	98.39
	825W	240	3.44	824.00	0.998	5.4	203.20	4.015	816	98.18	1.645	99.02
	750W	240	3.151	754.10	0.998	5.8	190.06	3.926	741	102.92	1.537	98.30
	660W	240.4	2.75	658.90	0.997	6.4	177.19	3.671	643	113.03	1.592	97.64
	600W	240.1	2.535	606.50	0.996	6.7	172.17	3.492	596	120.3	1.507	98.33