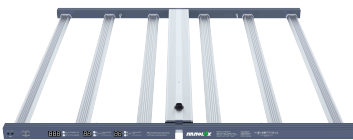
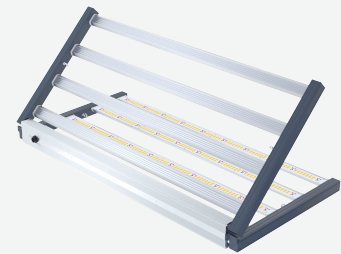
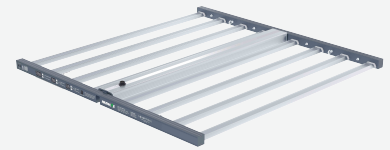


LED **SN** SERIES

LED **SN** 830 Pro



LED SN630 Pro



LED SN720 Pro/SN830 Pro/SN860 Pro



LED SN1000/SN1200 Pro

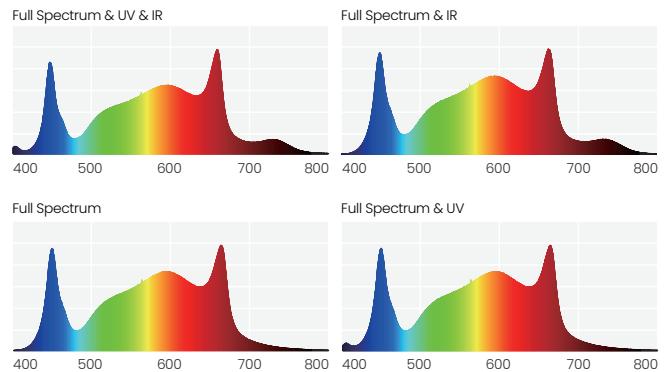
FEATURES

- Supplemental light source with stereoscopic multi-angle
- 8 spectrum combinations, flexible settings
- 3 dimming control models
- Tailor-made height

BENEFITS

- Full spectrum with UV and IR for supplemental light for each stage of plant production
- Optional intracanopy light, more comprehensive supplemental light
- 3 dimming options
- Efficiency is upto 2.9 $\mu\text{mol}/\text{J}$, energy saving.
- User safety, over-temperature/voltage/short-circuit protection

SPECTRUM GRAPH





SPECIFICATIONS

PRODUCT MODEL	LED SN630 Pro	LED SN720 Pro	LED SN830 Pro	LED SN860 Pro	LED SNI000 Pro	LED SNI200 Pro
PRODUCT CODE	80.01.0411	80.01.0417	80.01.0383	80.01.0394	80.01.0409	80.01.0408
INPUT POWER	630W	720W	830W	860W	1000W	1200W
LIGHT BARS	6 bars	8 bars	8 bars	8 bars	10 bars	10 bars
DIMMING	0-10V, RS485					
INPUT VOLTAGE	AC 120V-277V					
LIGHT OUTPUT PPF	1830 $\mu\text{mol/s}$	2090 $\mu\text{mol/s}$	2410 $\mu\text{mol/s}$	2500 $\mu\text{mol/s}$	2900 $\mu\text{mol/s}$	3480 $\mu\text{mol/s}$
EFFICIENCY	2.90 $\mu\text{mol/J}$					
INPUT FREQUENCY	50/60Hz					
LIGHT BEAM ANGLE	120°					
MOUNTING HEIGHT	8"- 24" (20-60cm) above canopy					
OPERATING TEMPERATURE	-20°C~35°C					
OPERATING HUMIDITY	0~95%					
HEAT DISSIPATION METHOD	Natural Heat Dissipation					
POWER FACTOR	≥ 0.97					
TOTAL HARMONIC DISTORTION	$\leq 15\%$					
CERTIFICATES	ETL/CE/EAC/UKCA/FCC/DLC/ROHS					
LIFETIME L90	$\geq 50,000\text{hrs}$					
IP RATING	IP65					
PRODUCT DIMENSIONS	1135x1110x60mm					
PRODUCT WEIGHT	8.7 KG	10.2 KG				12.5 KG
PACKAGING METHOD	1PC/Carton (LED fixture with Driver)					
PACKING DIMENSIONS	1160x140x620mm					
GROSS WEIGHT	11.8 KG	13.3 KG				15.0 KG
LOADING QUANTITY	20GP: 288 Carton 40HQ: 684 Carton					
STANDARD WARRANTY	5 years					

AC INPUT*

NOMINAL AC INPUT*

Input current at 100%	INPUT POWER AT 100%				
	120V	208V	220V	240V	277V
630W	5.43A	3.05A	2.86A	2.62A	2.28A
720W	6.10A	3.50A	3.30A	3.01A	2.60A
830W	7.14A	4.07A	3.84A	3.55A	3.06A
860W	7.40A	4.20A	3.90A	3.60A	3.10A
1000W	8.45A	4.90A	4.62A	4.22A	3.61A
1200W	10.12A	5.86A	5.53A	5.05A	4.33A

* At 25°C (77°F) Ambient Temperature

INTRACANOPY LED LIGHT (compatible with SN series)

PRODUCT MODEL	Intracanopy LED Light
PRODUCT CODE	80.03.0486
INPUT POWER	20 W
INPUT VOLTAGE	DC 54V-58V
LIGHT OUTPUT PPF	60 $\mu\text{mol/s}$
EFFICIENCY	3.0 $\mu\text{mol/J}$
LIGHT BEAM ANGLE	360°
MOUNTING HEIGHT	4"- 59" (10-150cm) above canopy
OPERATING TEMPERATURE	0°C~35°C
OPERATING HUMIDITY	0~95%
POWER FACTOR	$\cong 0.97$
TOTAL HARMONIC DISTORTION	$\leq 15\%$
CERTIFICATES	ETL/CE/EAC/UKCA/FCC/DLC/ROHS
LIFETIME L90	> 50,000hrs
IP RATING	IP66
PRODUCT DIMENSIONS	1180x65x45mm(2PCS)
PRODUCT WEIGHT	1.1 KG
PACKING DIMENSIONS	1195x210x205mm(24PCS)
GROSS WEIGHT	14.7 KG
LOADING QUANTITY	20GP: 524 Cartons 40HQ: 1320 Cartons

* Optional 1-4 Interlight LEDs for matching use

SPECTRUM GRAPH

