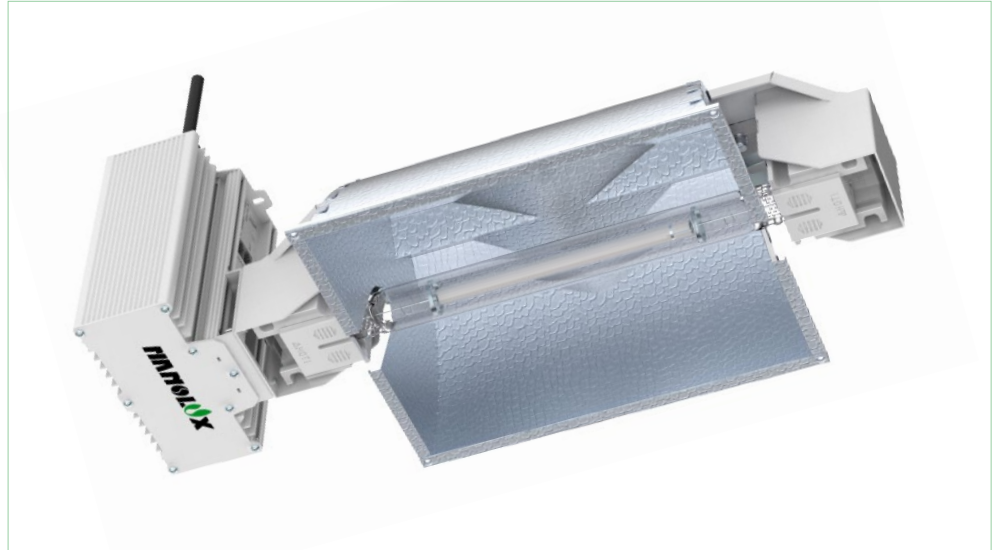
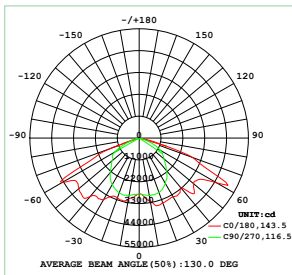


## DE Fixture-HPS/MH1000W 347V/380V/400V



### Features

- **Full digital circuit ballast with maximum efficiency up to 96%**

Pure aluminum alloy material is applied to help dissipate heat. Height and amount of create coolers (heat dissipation) are calculated accurately by thermodynamically technology. Products undergo rigorous testing to keep long-term safety and stability.

- **Reflector applies special material to achieve 97% reflectivity**

It's convenient and easy for users to regularly remove and clean, and easier to maintain the reflector. This design achieves highest efficiency of lighting. Reflector can enhance deeper penetration, which enables irradiation more evenly and guarantees the best angle for planting illumination area.

- **Ceramic socket with better insulation & non-flammability**

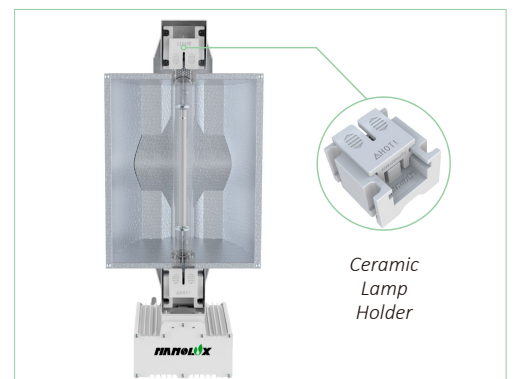
Alumina 95 ceramics with better hardness, high temperature and pressure resistance and non-flammability is applied for the socket that matches Nanolux patented design. The unique structure design is convenient and easy for users to replace and maintain the lamp and to guarantee the safety of production and management.

- **0-10V dimming makes centralized control available**

Control module in the fixture can make the group lighting control ON/OFF available along with 20%~100% precise dimming adjustment.

- **It is convenient & fast to install the sheet metal arms**

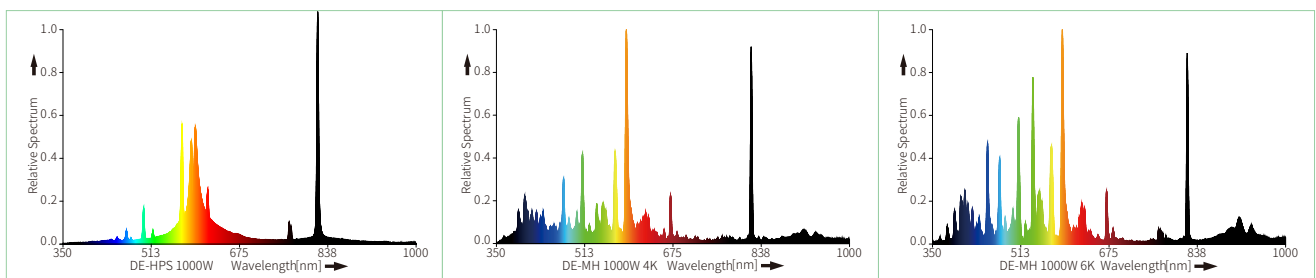
Sheet metal process design is adopted to prevent the deformation and rupture that may be caused by high and low temperature, thermal expansion and contraction. The lamp holder matching holes to fix the socket enables more stable structure. The reflector matching the automatic design is perfectly combined with arm mold. This is a secure, convenient and stable design.



## Specifications

Product	DE Fixture-HPS/MH1000W 380V
Product code	80.01.0195
Model code	NB-FDH/M1000H-347/380RNH1-EABI
Rated power	1000W
Max power	1100W
Input voltage	AC 347V/380V/400V
Input current	4.0A/3.1-2.8A
Input frequency	50/60Hz
Power factor	≥0.97
Efficiency	>96%
THD	≤10%
Protection	Open/short circuit protection, bulb faulty protection, bulb aging protection, input undervoltage protection, over-temperature protection
Operating temperature	0°C~35°C
Lamp available	Double ended HPS 1000W, Double ended MH 1000W
Initial Luminous Flux	150000lm (Double ended HPS 1000W)
PPF	2100μmol/s (Double ended HPS 1000W)
Requirement of installment	Comply with ETL/CE/EAC certificate
Whole machine efficiency	150000Lux (Laboratory test value)
Product dimensions	592x239x242mm
Product weight	5.0KG
Packaging method	Carton Box/2 set (Ballast, Arm, Reflector, Power cord, Lamp tube)
Packing dimensions	708x267x200mm
Gross weight	11.4KG
Number of containers	20GP: 630 Carton 40GP: 1400 Carton 40HQ: 1640 Carton
Warranty	Free replacement within 3 years for ballast, 1 year for lamp
Region applied	USA, Canada, Australia, EU, etc.
Industry applied	Grow lighting, industry lighting (Indoor only)

## Bulb Spectrum



Shenzhen Number Energy Saving Corporation

E-mail: sales@sznumber.com Tel: +86-755-28245686 Fax: +86-755-28245689 www.sznumber.com www.nanoluxtech.com  
No.6, Caiyun 1st Road., Longgang District, Shenzhen, 518172, Guangdong, P.R.China