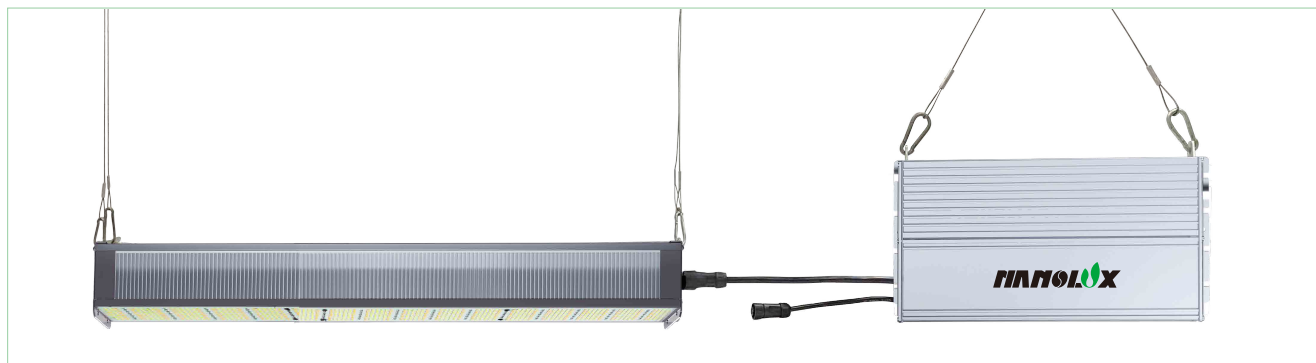
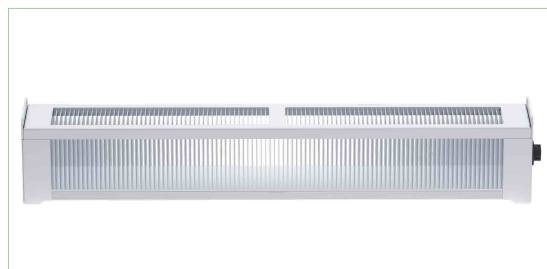
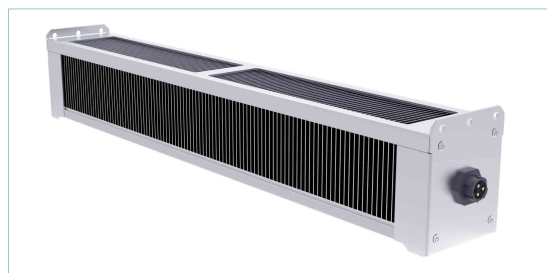


LED Top Lighting 315W



- ✓ Light weight and compact design
- ✓ Two or more spectrums available for options
- ✓ Wide input voltage 90V-528V
- ✓ Cost efficiency
- ✓ 0-10V wired lighting control



Features

• Light weight and compact design

The net weight of the fixture is 3.15KG, the lightest weight compared with that from competitors. The fixture size is 60x10x8cm that can ensure no shield of sunlight to the plants in greenhouses, maximizing PPF from the sunlight.

• Ultra wide input voltage meets needs in all applications

The voltage 90-305V is mainly used in home grow and indoor commercial facilities and the input voltage 315- 528V is used in outdoor greenhouse.

• Two or more light spectrums available for options

Full spectrum & Red is a good choice throughout full cycle of plant growth, seeding, vegetation and flowering in indoor facilities. Full spectrum & Blue is an ideal formula used in veg and flowering stage in outdoor greenhouses. Special spectrum can be customized as per specific needs.

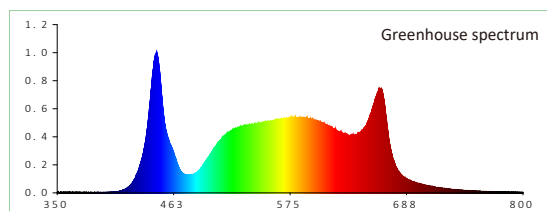
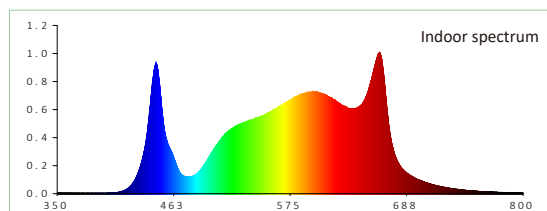
• IP65 ensures water proof, moisture proof & dust proof

No matter in indoor commercial facilities or in outdoor greenhouses, the environment is always at high temperature or high moisture. As a commercial grow lighting solution, IP65 is essential and necessary for grow lights to undergo tough environment.

• 0-10V dimming makes centralized control available

Control module in the fixture can make the group lighting control ON/ OFF available along with 20%~100% precise dimming adjustment.

Spectrum



Specifications

Model code	NB-LED tb 315W Fixture	
Product code	80.01.0298(spectrum for outdoor) / 80.01.0393(spectrum for indoor)	
Input power	315W	
Dimming	0-10V	
Input voltage	AC 90-305V/315 - 528V	
Light output PPF	900 μ mol/s	
Efficiency	3.0 μ mol/J	
Input frequency	50/60Hz	
Light distribution	120°	
Mounting height	>18" (45.7cm) above canopy	
Operating temperature	0°C~35°C	
Operating humidity	0~95%	
Thermal management	Passive	
Power factor	> 0.97	
Total harmonic distortion	< 10%	
Requirement of installment	Comply with ETL/CE/EAC/FCC certificate	
Lifetime L90	> 50,000hrs	
IP rating	IP65	
Product dimensions	LED Bar 60.5x10x8cm	LED Driver 32x17x6cm
Product weight	LED Bar 3.15KG	LED Driver 3.5KG
Packaging method	LED Bar Carton Box/2PCS	LED Driver Carton Box/6PCS
Packing dimensions	LED Bar 61.5x22.5x10.5cm/Carton	LED Driver 36x33.5x21cm/Carton
Gross weight	LED Bar 7.1KG/Carton	LED Driver 22.1KG/Carton
Number of containers (LED Bar)	20GP: 2500 Carton 40GP: 5500 Carton 40HQ: 6600 Carton	
Warranty	3 years standard warranty	
Region applied	USA, Canada, Australia, EU, Russia, etc.	
Industry applied	Grow lighting, Greenhouse	

Nominal Electrical Ac Input*

AC VOLTAGE	120V	208V	230V	277V	347V	400V	480V
AC Current	2.72A	1.53A	1.38A	1.14A	0.94A	0.81A	0.67A
AC Power	326W	318W	317W	315W	324W	323W	322W
Power Factor	0.99	0.99	0.99	0.98	0.99	0.99	0.97

* At 25°C (77°F) ambient temperature

Product size

